

PLAIN CITY
LOTS 47, 48, & 60 PLAT B

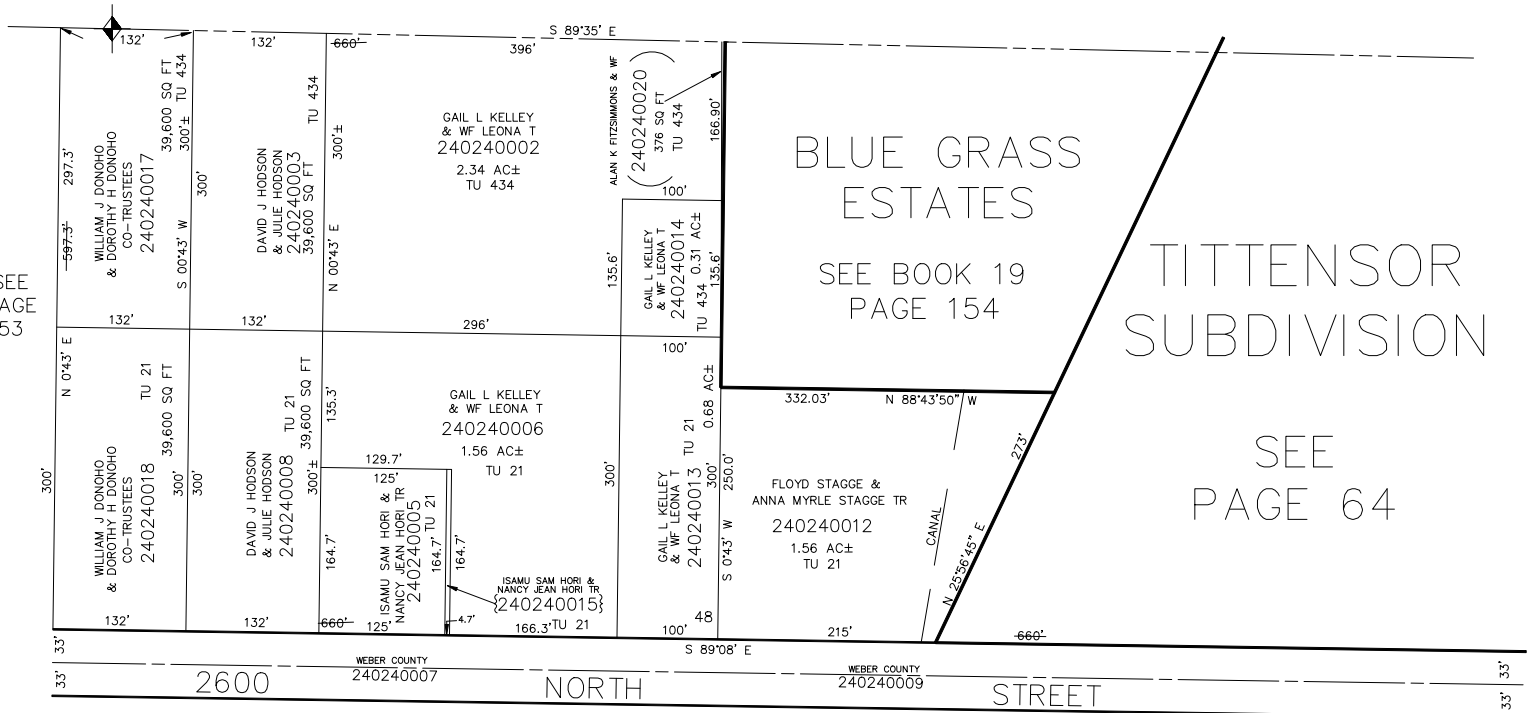
TAXING UNIT: 21, 434

SCALE 1" = 100'

SEE BOOK 19, PAGE 24

SEE PAGE 53

SEE BK. 19, PG. 35



SEE PAGE 50

SEE ORIGINAL DEDICATION
PLAT OF PLAIN CITY IN
BOOK 5, PAGE 80 OF RECORDS.